


# New genetic

Sanette x Concerto

Carsten Lundsteen / Syngenta Nordic

- 
- ✓ New genetics Syngenta
  - ✓ Doing well in any climate conditions
  - ✓ Top performing variety in most European countries in 2017
  - ✓ Highest performing variety in Denmark 2014-17
  - ✓ Extremely good tillering ability
  - ✓ Very good disease resistens profile
  - ✓ Doing well with high nitrogen level
  - ✓ Suitable for both malt / distillation (Non-GN)
  - ✓ IBD & CBMO approved

A vertical strip on the left side of the slide shows a close-up of several green wheat stalks with developing grain heads, set against a clear blue sky. The stalks are in sharp focus, showing the texture of the leaves and the structure of the grain.

# Laureate agronomic 2018

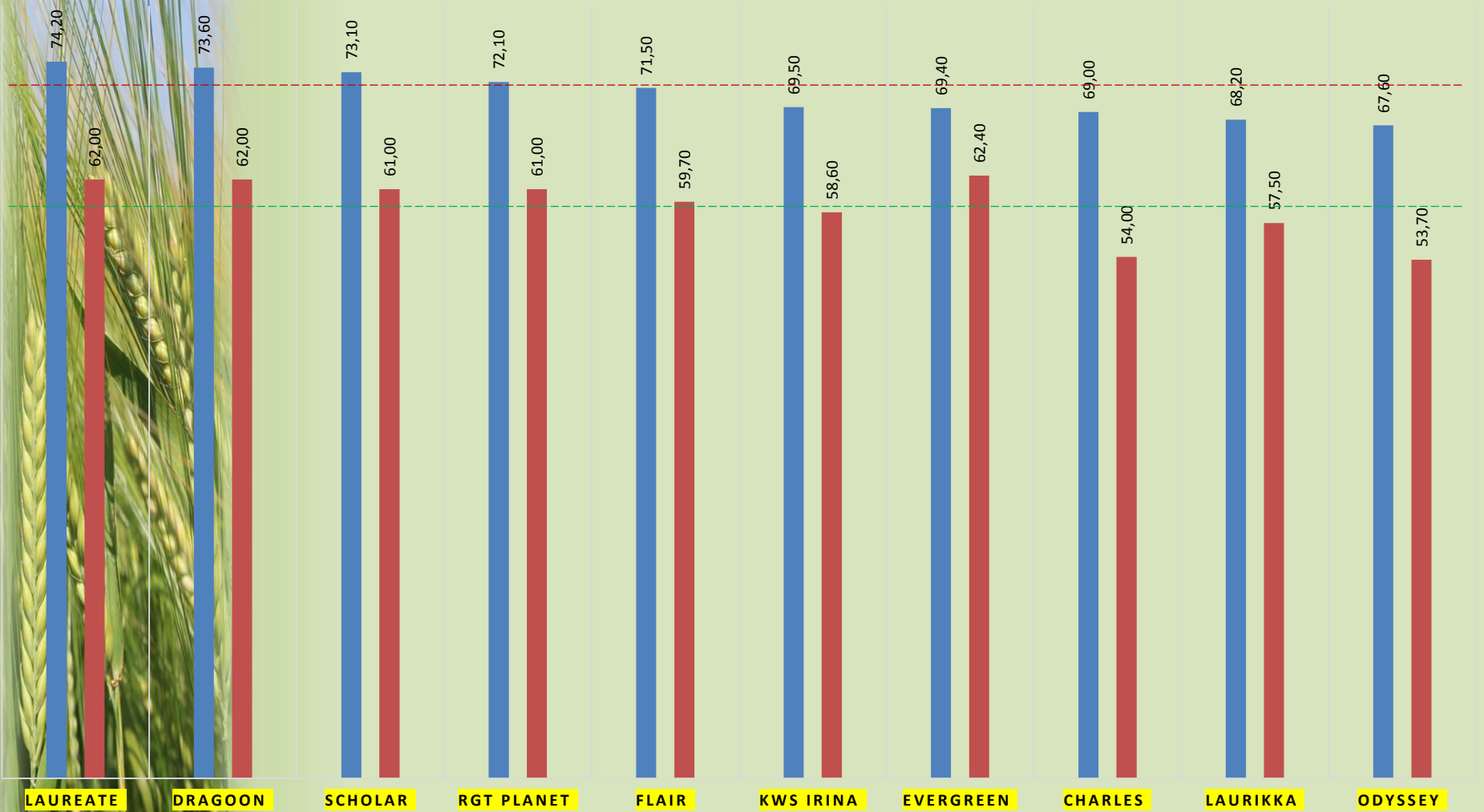


# Laureate – stable high performance

Foderbyg Sort	Fremavl's areal	Kerneudbytte				
		(fht)	(fht)	(fht)	(fht)	(fht)
	2017	2017	2016	2015	2014	2013
Laureate	609	105	103	105	105	
RGT Planet	6.141	103	102	103	104	106
KWS Irina	5.119	99	98	100	103	103
Odyssey	360	96	96	100	101	102

# FUT DENMARK SPRINGBARLEY 2017 TREATED OG UNTREATED HKG/HA

■ Behandlet ■ Ubehandlet



# Grading

God

- Propino
- Laureate
- RAGT Planet
- LG Diablo
- Embrace

Med

- Charles
- Odyssey
- Dragoon
- KWS Irina

Lav

- Laurikke
- Flair
- Scholar

\* Kilde : Syngeneta vurderinger

# Protein content

Lavt

- LG Diablo
- Scholar
- Dragoon
- Embrace

Med

- Laureate
- RAGT Planet
- KWS Irina
- Evergreen

Højt

- Charles
- Laurikke
- Propino

\* Kilde : Syngeneta vurderinger

# AGRONOMI

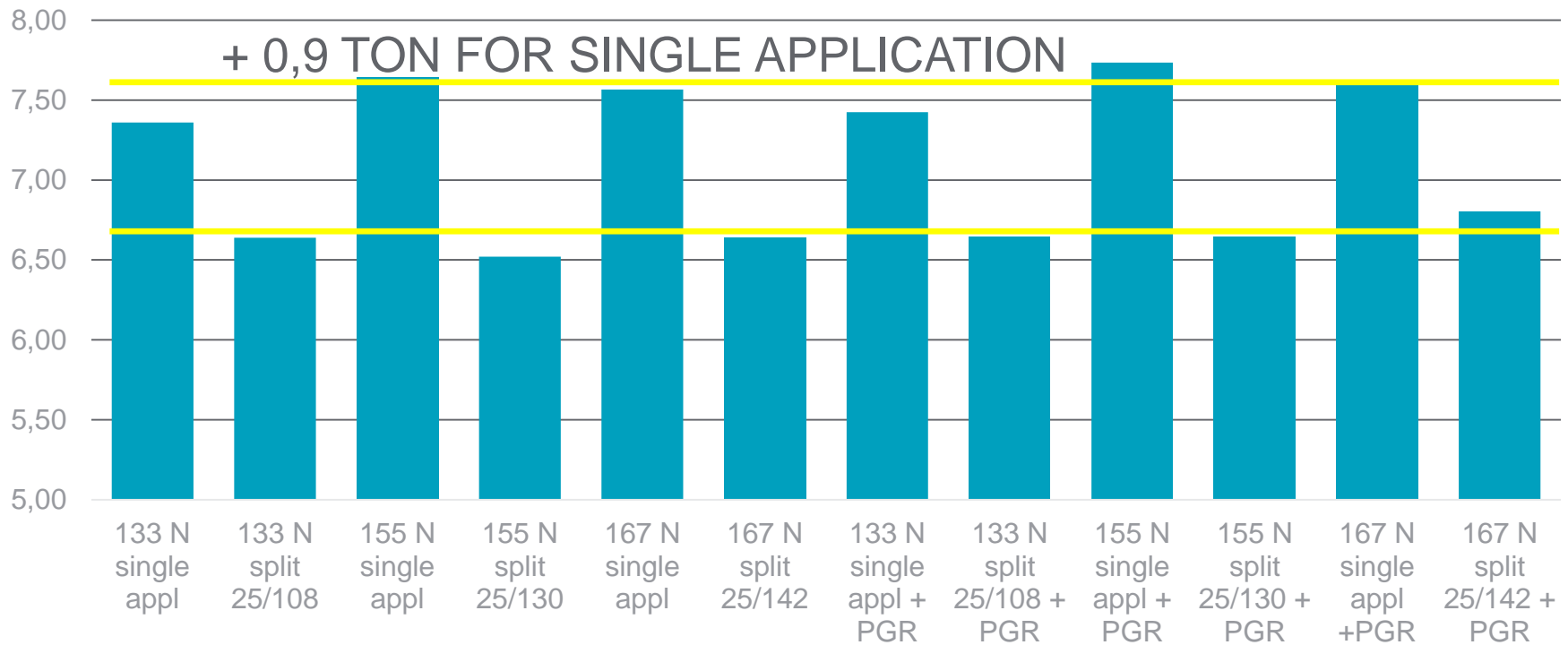
## Resultater fra stats- og landsforsøg

Sort	Gns. 2 år		Udbytte (fht)					Merudbytte for svampebek. (t/ha/ha)		Råprotein(%)		Kerne sortering > 2,5 mm (%)		Kerne sortering > 2,8 mm (%)		Hektolitervægt (kg/hl)		Meldug (%)		Bygrust (%)		Skoldplet (%)		Bladplet (%)		Ramularia(%)		Modning (dato)		Strå længde (cm)		Lejesæd, LF (kar. 0 - 10)		Lejesæd, OBS (kar. 0 - 10)		aks nedknægning (kar. 0 - 10)		strå nedknægning (kar. 0 - 10)		Nematode	
	Gns.	Gns.	17	16	15	14	13	17	16	17	16	17	16	17	16	17	16	17	16	17	16	17	16	17	16	17	16	17	16	17	16	17	16	17	16	I	II				
Blanding	100	100	100	100	100	100	100	11	3	11,4	11,0	94	94	79	80	64	66	0	0	17	13	0	4	1	1	14	17	05-aug	05-aug	61	58	2	1	1	1	2	3	5	3	-	-
Chanson null-lox	100	101	102	99	102			12	2	11,2	11,0	96	94	84	84	64	64	0	0	20	19	0	1	0	0	19	15	05-aug	06-aug	63	62	2	1	4	2	1	2	6	6	-	-
Cosmopolitan	102	103	103	101	105			13	4	11,2	11,0	95	94	84	86	64	65	0	0	20	18	0	0	1	2	16	15	04-aug	08-aug	61	60	2	1	5	1	3	3	7	4	M	M
Crossway	99	101	99	99	101	100	105	11	3	11,2	10,9	96	93	83	81	65	66	0	0,06	19	16	0	2	1	1	20	15	07-aug	07-aug	60	58	2	1	2	2	5	2	7	4	R	R
Embrace	104	104	105	102	104			10	4	11,0	10,7	96	94	84	84	64	66	0	0	21	11	2	0	0	1	19	11	05-aug	07-aug	62	56	2	1	2	1	3	5	3	2	M	M
Flair	102	104	102	102	103	109		12	5	11,4	10,9	94	93	77	76	64	66	0	0	16	13	0	4	0	0	20	18	03-aug	06-aug	59	56	2	1	1	2	2	4	6	1	R	R
KWS Beckie	100	102	101	99	102	106		11	5	11,3	11,1	97	96	88	90	64	65	0	0	23	16	0	1	0	0	15	13	03-aug	05-aug	55	54	2	1	0	0	4	4	4	1	M	M
KWS Cantton	101	102	100	101	101	103	105	8	2	11,3	10,9	95	95	83	86	65	67	0	0	15	4	1	0	1	2	9	11	07-aug	06-aug	67	64	2	1	1	1	1	2	3	5	R	R
KWS Fantex	100	101	101	99	95	107		11	2	11,3	11,0	96	94	85	85	65	66	0	0	19	13	0	2	0	0	10	13	05-aug	07-aug	61	57	2	1	3	0	3	2	4	4	R	R
KWS Irina	98	101	99	98	100	103	103	11	2	11,4	10,9	95	94	81	82	64	65	0	0	18	16	0	1	0	0	14	13	06-aug	05-aug	57	54	1	0	0	0	1	2	2	1	R	R
Laureate	104	105	105	103	105	105		12	4	11,2	10,7	95	95	86	87	64	65	0	0	12	10	0	2	0	0	10	11	06-aug	07-aug	60	60	2	1	2	1	3	4	5	1	-	-
RGT Planet	103	104	103	102	103	104	106	11	3	11,3	10,8	96	95	86	86	65	66	0	0	16	12	1	3	1	2	16	11	05-aug	06-aug	59	62	2	1	3	1	5	3	4	5	R	R



# Nitrogen

Yield 15%, protein content TGW, Spec. weight  
Yield t/ha



Seeding date: 7/4-2017

Fertilizer dates

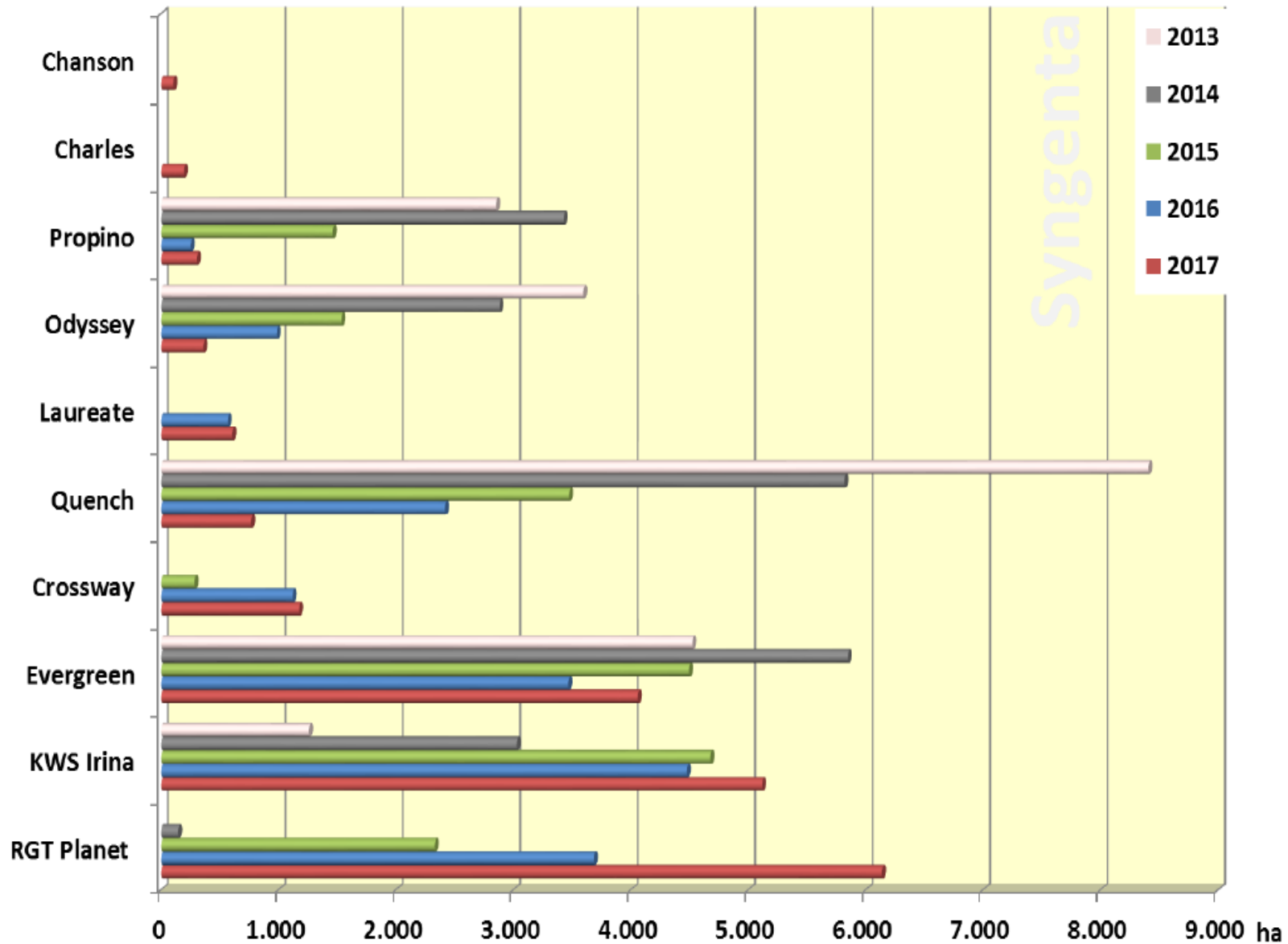
7/4-2017 GS 00

23/5-2017 GS 21

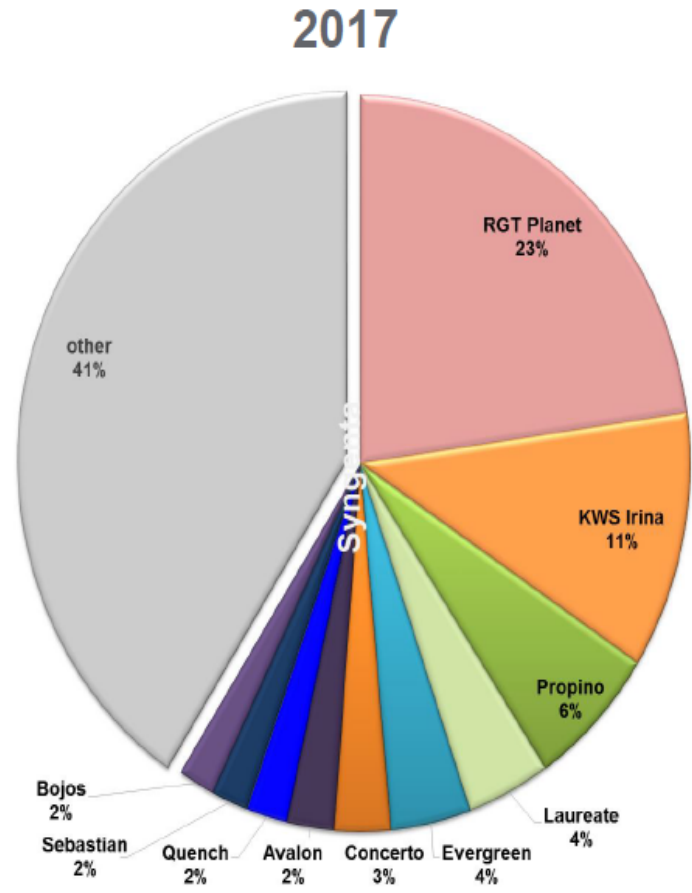
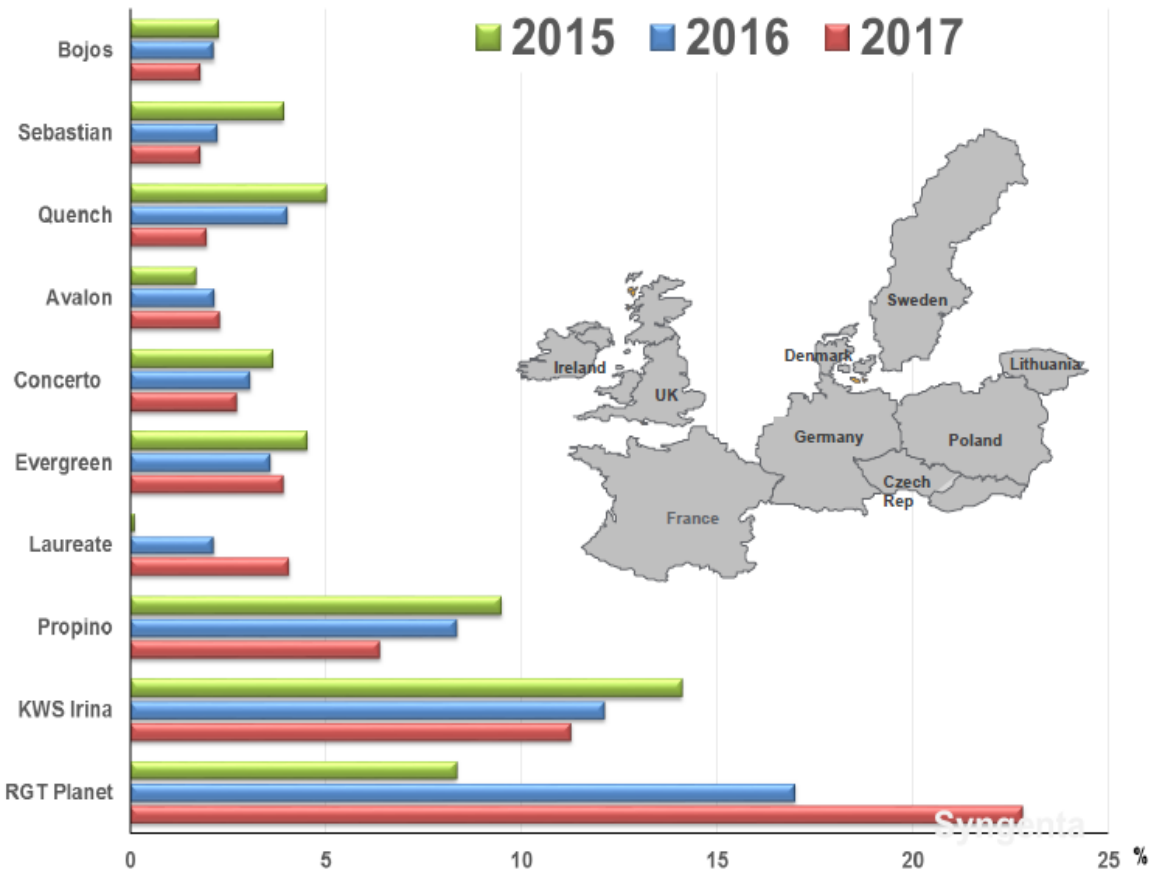




# DK: seed production top 10 malting barley varieties 2017 (ha entered)



# Market share in seed production for the top 10 varieties:



# European spring malting barley approvals harvest 2018

IBD approved list harvest 2018			
	Brewing use	Malt disitlling use	Grain distilling use
Full Approval	Concerto	Concerto	
	Laureate	Laureate	
	KWS Irina		
	RGT Planet		
	Propino		
Provisional Approval 2		KWS Sassy	
		Sienna	
			Fairing
Provisional Approval 1	Chanson		

CBMO brewing varieties preferred list harvest 2018						
<b>Preferred varieties</b>						
> 15.000 ha	KWS Irina	RGT Planet	Sebastian			
< 15.000 ha	Prestige	Sunshine				
Limited use	Explorer					
<b>Varieties under commercial and industrial observation</b>						
	KWS Fantex	RGT Asteroide	Ellinor	Fandaga	Esma	Laureate
<b>Varieties admitted for technological validation</b>						
	Liberta	RGT Orbiter				

Spanish Malting barley list harvest 2018/19		
<b>Preferred varieties</b>		
Pewter	Shakira	Traveler
<b>Varieties in observation</b>		
RGT Planet	KWS Fantex	Chronicle
<b>Varieties in validation</b>		
RGT Asteroid	Sienna	Laureate

Berliner Program approvals			
2007	Marthe	Power	
2008	Quench	Lisanne	
2009	Streif		
2010	Grace		
2011	Propino	Sunshine	KWS Bambina
2012			
2013	Catamaran	Passenger	
2014	Solist		
2015	Avalon		
2016	Ventina		
2017	Cervinia		
2018	Accordine		
2019	Leandra ?		

# UK – Godkendelse malt/destillering

F8 and F9 NL1 and NL2	F10 RL1	F11 RL2 <b>Provisional Approval (1)</b> YEAR 2	>F11 <b>Provisional Approval (2)</b>	>F11 <b>Full Approval</b>
YEAR 0	YEAR 1			<b>Harvest 2018 In commercial use</b>
Micromalt <i>England</i> NIAB EMMG  <i>Scotland</i> SMMG	Micromalt <i>England</i> NIAB EMMG  <i>Scotland</i> SMMG	Macroscale Maltsters Brewers Distillers	Macroscale Maltsters Brewers Distillers	
				<b>Flagon</b> w B <b>Venture</b> w B <b>Talisman</b> w B <b>Concerto</b> s BD <b>Laureate</b> s BD  <b>Propino</b> s B <b>KWS Irina</b> s B <b>RGT Planet</b> s B  <b>Sienna</b> s D <b>KWS Sassy</b> s D
			<b>Craft</b> w B <b>Fairing</b> s G	
		<b>Chanson</b> s B		
<b>2</b> w B <b>5</b> s B  <b>5</b> s BD <b>1</b> s BDG <b>1</b> s BG  <b>1</b> s D <b>2</b> s DG	<b>Coref</b> w B <b>Electrum</b> w B  <b>Diablo</b> s BD <b>Asteroid</b> s BDG  <b>Tomahawk</b> s D <b>Dioptric</b> s G			

F8/9/10/11 = stage in seed production  
 NL1/NL2/RL1/RL2 = stage in official testing  
 s = spring variety  
 w = winter variety

B = approved for brewing use  
 D = approved for malt distilling use  
 G = approved for grain distilling use

**IBD**  
 THE INSTITUTE OF BREWING & DISTILLING